

VISION RESIDENCES

Unrivalled Home Comforts

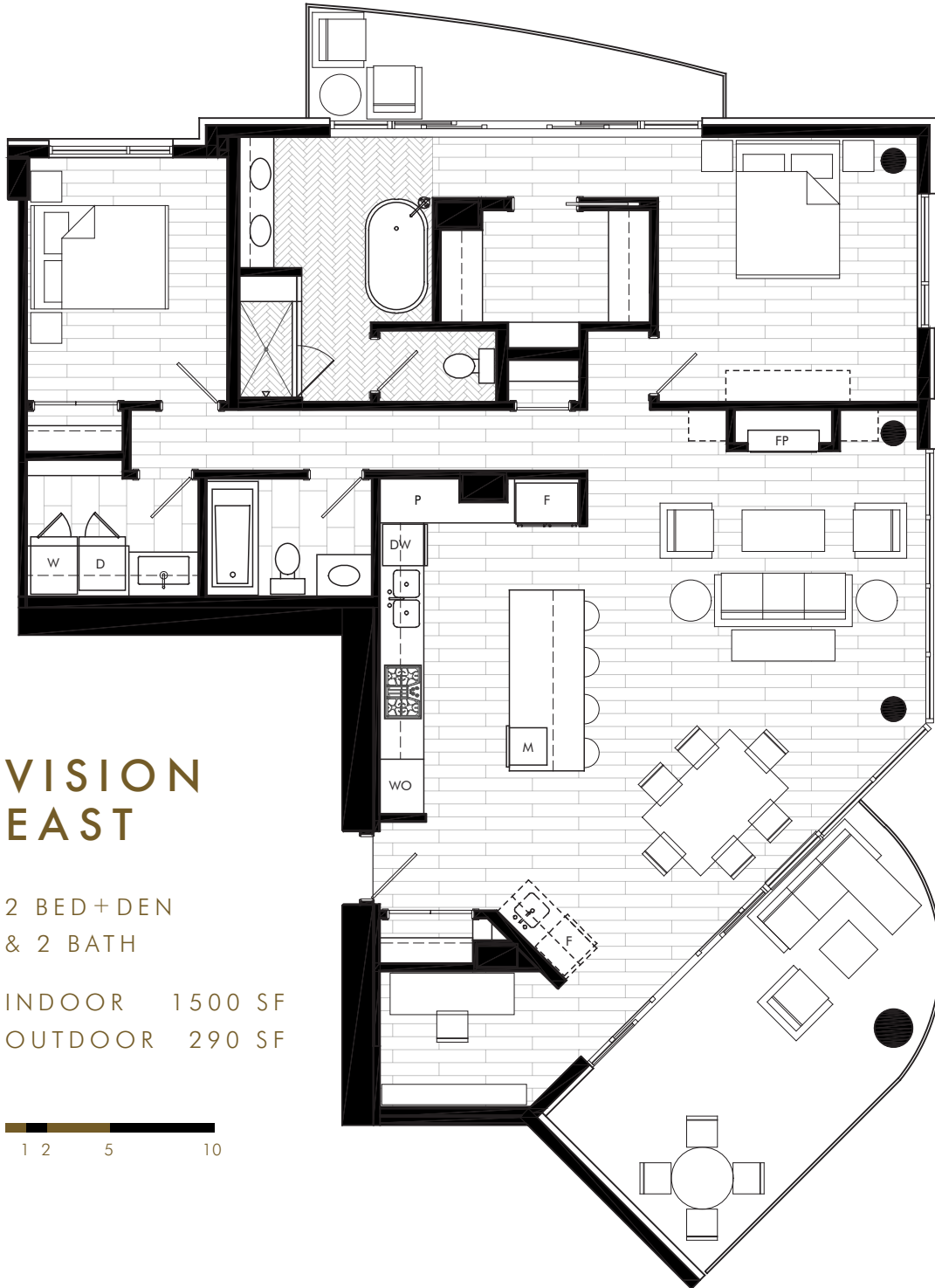
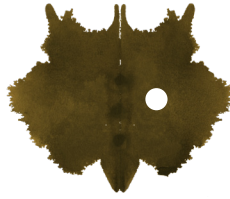
- Sophisticated colour scheme featuring bright and timeless white painted millwork paired with rich, warm wood dressed with matte black hardware
- Lush, wide plank, engineered hardwood flooring seamlessly connects each space in the home with the exception of the Bathrooms and Laundry Room featuring rich, marble floors
- Fully equipped Laundry Room featuring side-by-side washer and dryer, laundry sink, ample storage and quartz counters ideal for folding clothes
- Abundant, finely tailored millwork and closet storage integrated in each home
- Sustainable HRV/VRF system supplies each home with fresh air while maintaining a desired climate
- Contemporary, linear gas fireplace with marble surround and custom millwork bookcases adorned with matte black hardware are a Great Room focal point
- BBQ hook up and hose bib located on Great Room patio
- Oversized, floor-to-ceiling, energy efficient windows showcase the absolute best of White Rock's breathtaking views
- Energy efficient, LED lighting for fewer bulb changes
- Walk-in closet custom organization system includes hanging rods, full drawers, and shoe storage
- Included window coverings consist of contemporary, hassle-free roller shades, not including porthole windows

A Kitchen Refined

- Oversized island showcases abundant culinary space, fully equipped for storing, prepping, and entertaining guests
- Luxurious marble countertops adorn the Kitchen, cascading down the island in a sleek, waterfall edge. Matching marble slab backsplash is sure to turn heads
- Fitted with sophisticated plumbing fixtures, including under-mount stainless steel sink and contemporary faucet in matte black
- Dining Room includes custom millwork beverage bar with contemporary glass upper cabinets, sleek stainless steel under-mount sink, matte black faucet, integral marble backsplash and countertop with millwork panelled beverage fridge
- Superior, soft-close cabinet doors and recessed LED under-cabinet lighting
- Pull-out garbage/recycling drawer and built-in cabinet organizers provide every opportunity to take full advantage of the Kitchen's storage
- In sink garburator for quick and easy food waste disposal
- Fully integrated, select millwork panelled gas appliance package for a sleek, seamless appearance

Bathe in Luxury

- Premium plumbing fixtures outfit each full bathroom with sleek under-mount sinks, daring matte black faucets, comfort height toilets and spa-inspired shower systems
- The Master Ensuite showcases an extravagantly built-up marble vanity countertop over contemporary bright white millwork with custom, full width, mirrored medicine cabinet
- The Master Ensuite features a lavish freestanding soaker tub purposefully positioned to promote taking in the view while you unwind. Integrated shower bench and private water closet are also included luxuries
- Marble tile bathroom wet walls and floor provide striking elegance and minimal grout lines
- The secondary bathroom is equipped with a deep alcove tub/shower combo and contemporary white vanity with quartz counters
- In-floor electric heating adds quick comfort to each bathroom



VISION EAST

2 BED+DEN
& 2 BATH

INDOOR 1500 SF
OUTDOOR 290 SF

