



FANTOM

VISION PREVIEW PACKAGE



FINISHED TO THE TEETH

An architectural landmark inspired by the prows of mighty seafaring vessels, the award-winning Fantom community stands as a beacon of true White Rock seaside living.

Built by nationally awarded Forge Properties and designed by renowned Ankenman and Associates Architects, Fantom is located west of Forge's celebrated Royce community.

Designed and detailed to optimize view enjoyment, a Fantom residence relishes prized southern exposures, meticulously appointed interiors and ample room both in and out to enjoy and entertain.

Secure Living

The most exclusive estate in White Rock, Fantom is a legacy community without compromise. Limited to a select 25, a Fantom residence is rare and highly sought after.

Fully secured with only three homes per floor and a total of 25 individual residences, a Fantom homeowner will enjoy the comfort of knowing their neighbours. Electronic fob access and fully secured underground parkade with safety cameras can be remotely monitored, accessed and recorded by the strata.

A fully dedicated and secure first floor of exclusive amenities ensures an additional layer of protection for residents to rest easy. In-home security consists of hard-wired smoke and CO2 detectors and a heavy-duty entry door deadbolt with an accompanying viewer. Residences at Fantom include pre-wiring for future installation of additional in-home security, including provision for alarm keypad and motion detectors.

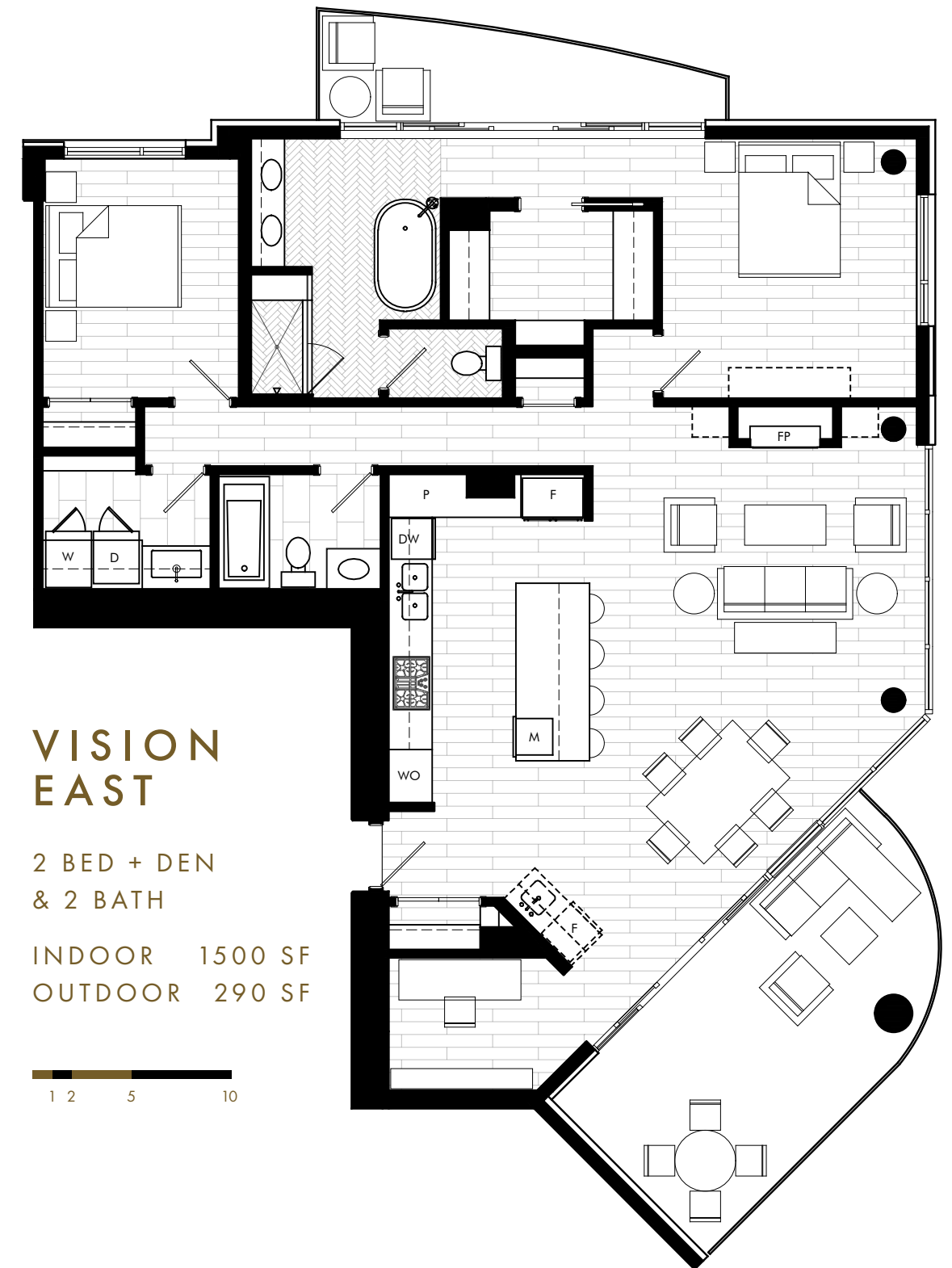
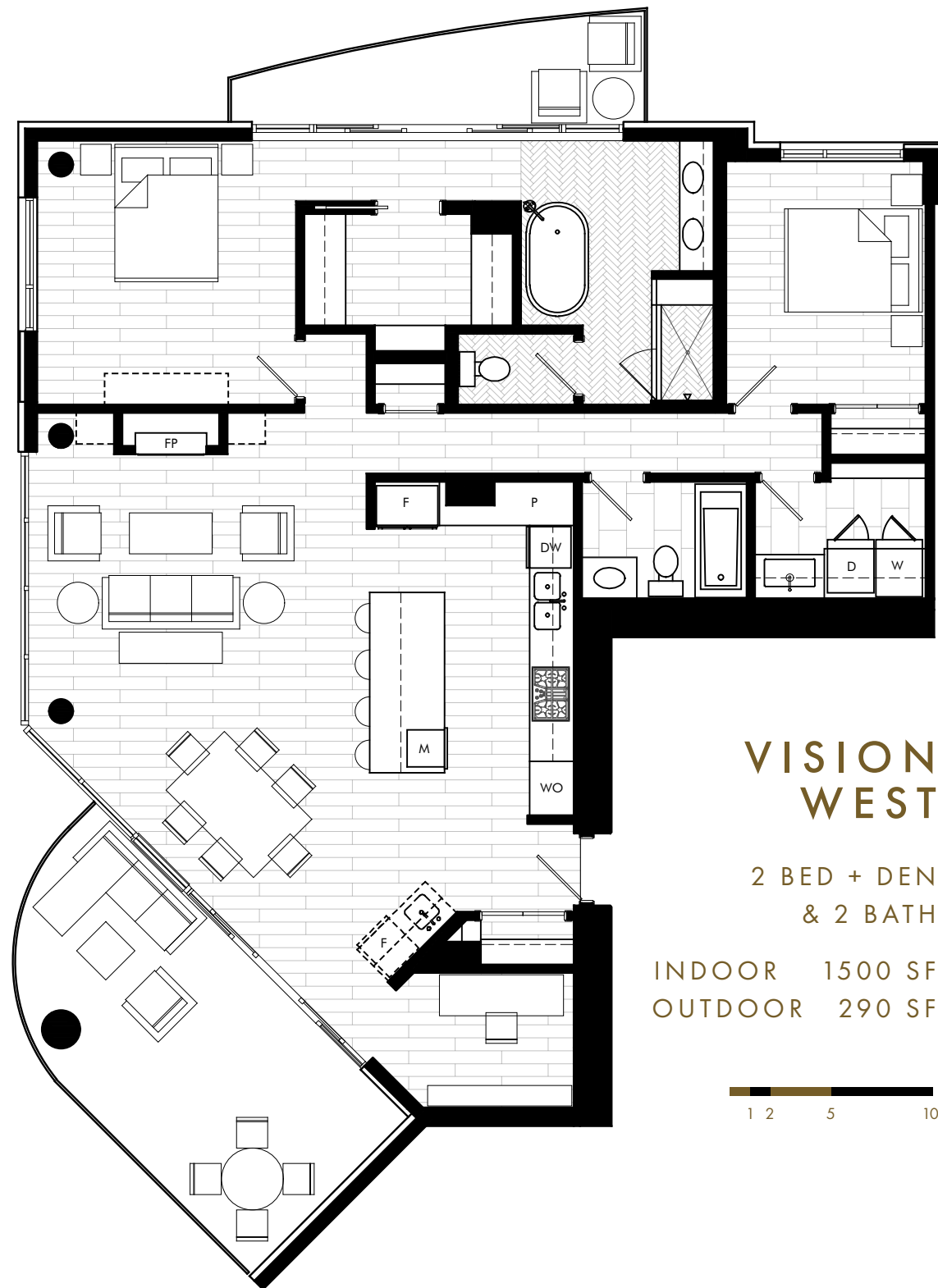
25 PRESTIGIOUS VIEW RESIDENCES



THE VISION RESIDENCES

Designed and detailed to optimize view enjoyment, the Vision residences at Fantom relish prized southern exposures, meticulously appointed interiors and ample room both in and out to enjoy and entertain.





Residents at Fantom can choose from Vision East or Vision West, both showcasing breathtaking scenic views of White Rock's iconic shores.



UNRIVALLED HOME COMFORTS

- Sophisticated colour scheme featuring bright and timeless white painted millwork paired with rich, warm wood dressed with matte black hardware
- Lush, wide plank, engineered hardwood flooring seamlessly connects each space in the home with the exception of the Bathrooms and Laundry Room featuring rich, marble floors
- Fully equipped Laundry Room featuring side-by-side washer and dryer, laundry sink, ample storage and quartz counters ideal for folding clothes
- Abundant, finely tailored millwork and closet storage integrated in each home
- Sustainable HRV/VRF system supplies each home with fresh air while maintaining a desired climate
- Contemporary, linear gas fireplace with marble surround and custom millwork bookcases adorned with matte black hardware are a Great Room focal point
- BBQ hook up and hose bibs located on Great Room patio
- Oversized, floor-to-ceiling, energy efficient windows showcase the absolute best of White Rock's breathtaking views
- Energy efficient, LED lighting for fewer bulb changes
- Walk-in closet custom organization system includes hanging rods, full drawers, and shoe storage
- Included window coverings consist of contemporary, hassle-free roller shades, not including porthole windows





VISION | Laundry Room



VISION | Den





A KITCHEN REFINED

- Oversized island showcases abundant culinary space, fully equipped for storing, prepping, and entertaining guests
- Luxurious marble countertops adorn the Kitchen, cascading down the island in a sleek, waterfall edge. Matching marble slab backsplash is sure to turn heads
- Fitted with sophisticated plumbing fixtures, including under-mount stainless steel sink and contemporary faucet in matte black
- Dining Room includes custom millwork beverage bar with contemporary glass upper cabinets, sleek stainless steel under-mount sink, matte black faucet, integral marble backsplash and countertop with millwork panelled beverage fridge
- Superior, soft-close cabinet doors and recessed LED under-cabinet lighting
- Pull-out garbage/recycling drawer and built-in cabinet organizers provide every opportunity to take full advantage of the Kitchen's storage
- In sink garburator for quick and easy food waste disposal
- Fully integrated, select millwork panelled gas appliance package for a sleek, seamless appearance



BATHE IN LUXURY

- Premium plumbing fixtures outfit each full bathroom with sleek undermount sinks, daring matte black faucets, comfort height toilets and spa-inspired shower systems
- The Master Ensuite showcases an extravagantly built-up marble vanity countertop over contemporary bright white millwork with custom, full width, mirrored medicine cabinet
- The Master Ensuite features a lavish freestanding soaker tub purposefully positioned to promote taking in the view while you unwind. Integrated shower bench and private water closet are also included luxuries
- Marble tile bathroom wet walls and floor provide striking elegance and minimal grout lines
- The secondary bathroom is equipped with a deep alcove tub/shower combo and contemporary white vanity with quartz counters
- In-floor electric heating adds quick comfort to each bathroom







VISION | Master Bedroom



VISION | Master Walk-In



LOBBY & RECEPTION



EXCLUSIVE AMENITIES

Revel in the unrivalled luxuries Fantom has to offer. As the owner of a prized Fantom residence, enjoy private access to over 4,500 sq.ft of exclusive indoor and outdoor amenities.

Be welcomed by a dramatic lobby with soft seating around a 2-sided/see-through gas fireplace, concierge desk, visitors' restroom, and conveniently located mailboxes.

Unwind in the fully outfitted Residents' Lounge featuring a coffee bar including beverage fridge, bar sink, and coffee machine, enclosed outdoor patio space, and linear 2-sided/see-through gas fireplace with TV above.

Enjoy the private Theatre and Bar with fully equipped kitchen, expansive dining table, enclosed outdoor patio space with BBQ, and dedicated viewing area with tiered theatre seating.

Embrace a healthy lifestyle with the exclusive Health and Fitness Wing, outfitted with multiple cardio machines and free weights, and individual men's and women's dressing rooms each with changing stalls, shower, and a spacious sauna.

Gather in the bright, flexible Event Room, ideal for hosting events, classes, and group activities.

Reflect in the beautifully landscaped greenspace surrounding the building featuring a woodland walking path and resident benches surrounding a serene water feature.



RESIDENTS'
LOUNGE





THEATRE & BAR





HEALTH &
FITNESS WING





SEASIDE COMMUNITY

As a Fantom homeowner, be immersed in the best dining, shopping and entertainment our coastal community has to offer.

DINE

1. Marine Drive

- West Beach Bar & Grill
- Cosmos Greek Restaurant
- The Boathouse
- Charlie Don’t Surf
- Uli’s Restaurant
- Docks Fish and Chips
- Primos Mexican Grill
- Washington Avenue Grill

2. Pacific Ave.

- Laura’s Coffee Corner
- Emilio Finatti Sicilian Pizzeria

3. Johnston Rd.

- ONYX Steakhouse

- Islands Cafe
- Hillcrest Bakery & Deli
- 3 Dogs Brewing
- White Rock Beach Beer Company
- Wooden Spoon
- Browns Social House
- White Spot

4. Grandview Corners

- The Carvery Sandwich Shop
- My Shanti
- Famoso Neapolitan
- Earls
- S+L Kitchen & Bar
- Liberty Kitchen

5. South Point Exchange

- Damiko Sushi
- Milestones
- Cactus Club Cafe
- The Keg Steakhouse

6. Crescent Beach

- Fieldstone Bread
- The Sunflower Cafe

7. White Rock

- White Rock Pier
- Lions Lookout Park
- The White Rock
- White Rock Promenade
- Memorial Park
- Pamper Me Day Spa
- White Rock Library
- Blue Frog Studios
- White Rock Farmers’ Market
- White Rock Players Club
- Bayview Park
- Ruth Johnson Park

- Centennial Arena
- Centennial Park – Off Leash Dog Park
- Generations Playground
- Centennial Park – Tennis Courts

8. South Surrey

- South Surrey Indoor Pool
- South Surrey Athletic Park & Recreation Centre
- Sunny Acres Urban Forest
- Semiahmoo Library
- Sandcastle Bowl Bar & Grill
- Aru Spa & Salon

- Caprice Movie Theatre
- Steve Nash Fitness
- Float House
- Casbah Day Spa
- Morgan Creek Golf Club
- Nico-Wynd Golf Course

9. Crescent Beach

- Crescent Park
- Blackie Spit Park
- Crescent Beach
- 1001 Steps
- Kwomais Point Park

SHOP

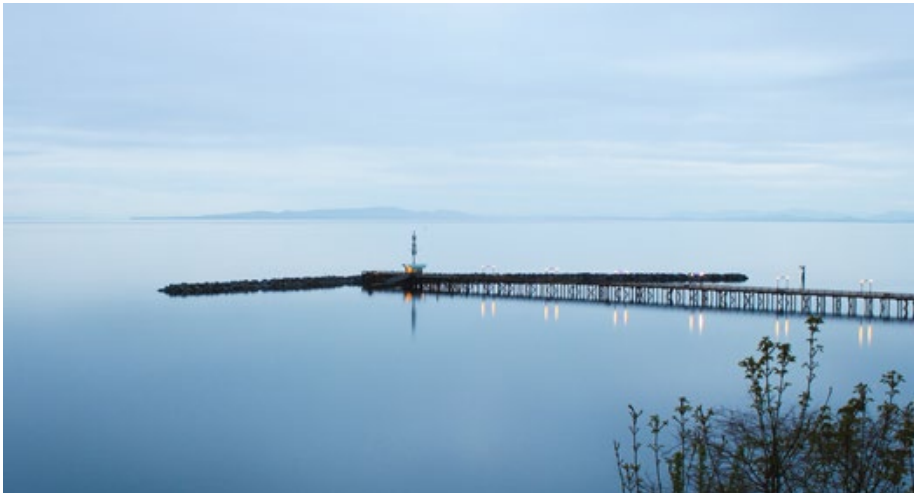
- 10. Semiahmoo Shopping Centre
- 11. Grandview Corners
- 12. Morgan Crossing

- 13. Peninsula Village
- 14. South Point Exchange
- 15. Ocean Park Shopping Centre

SCHOOL

- 16. Semiahmoo High School
- 17. H.T. Thrift Elementary School







An aerial photograph of a coastal town, likely Seattle, with a dense residential area built on a hillside. A long, straight pier extends from the shore into the water, ending in a marina where several sailboats are docked. The water is a deep blue, and the sky is clear. In the background, a range of mountains is visible under a bright sky. The text "EXCLUSIVE SEASIDE LIVING" is overlaid in white, sans-serif capital letters across the middle of the image.

EXCLUSIVE SEASIDE LIVING



FANTOM

HARD HAT TOURS ON NOW
14825 THRIFT AVENUE, WHITE ROCK

Book your private appointment today
604.538.8028 fantom@forge.ca

In our continuing effort to improve and maintain the high standard of the Fantom Development, the Developer reserves the right to modify or change plans, specifications, features, upgrades, options, promotions and prices without notice. Materials, finishes, features and upgrades are subject to availability and may be substituted at the Developer's sole discretion. All views, dimensions, scales and sizes are based on Architectural measurements. Renderings are an artist's conception and are intended as general reference only. Please refer to the Disclosure Statement for specific offering details. E. & O. E.