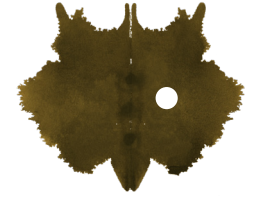


SPECTRE



Unrivalled Home Comforts

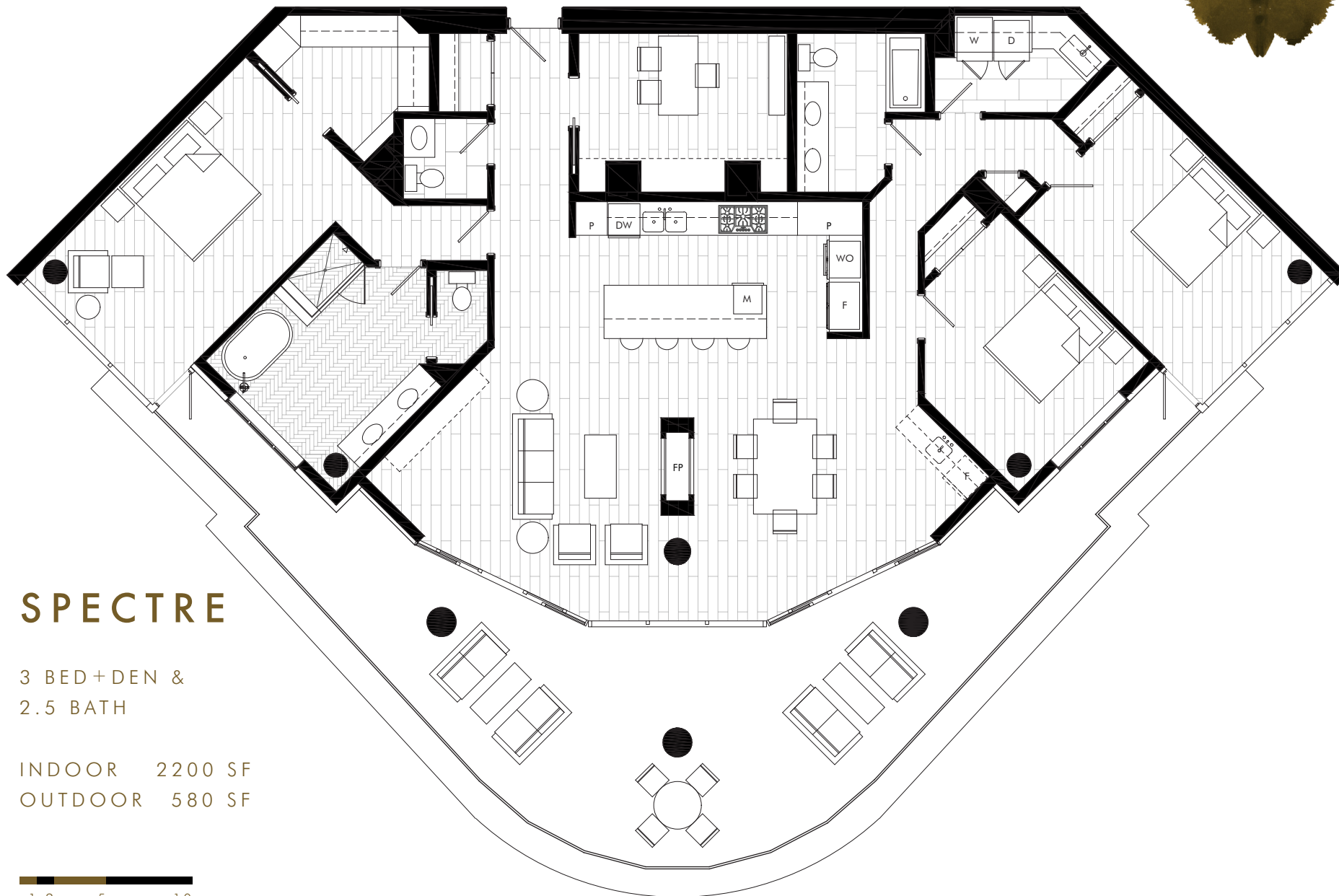
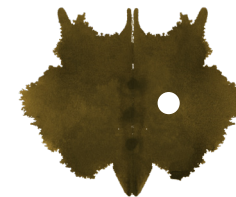
- Sophisticated colour scheme featuring an elegant mix of daring, dark painted millwork and rich, warm wood adorned in matte black hardware
- Lush, wide plank, engineered hardwood flooring seamlessly connects each space in the home with the exception of the Bathrooms and Laundry Room featuring rich, marble floors
- Fully equipped Laundry Room featuring side-by-side washer and dryer, laundry sink, ample storage and quartz counters ideal for folding clothes
- Abundant, finely tailored millwork and closet storage integrated in each home
- Sustainable HRV/VRF system supplies each home with fresh air while maintaining a desired climate
- Contemporary, 2-sided/see-through linear gas fireplace connects the Living and Dining Room
- BBQ hook up and hose bibs located on Great Room patio
- Oversized, floor-to-ceiling, energy efficient windows showcase the absolute best of White Rock's breathtaking views
- Energy efficient, LED lighting for fewer bulb changes
- Walk-in closet custom organization system includes hanging rods, full drawers, and shoe storage
- Included window coverings consist of contemporary, hassle-free roller shades, not including porthole windows

A Kitchen Refined

- Oversized island showcases abundant culinary space, fully equipped for storing, prepping, and entertaining guests
- Luxurious marble countertops adorn the Kitchen, cascading down the island in a sleek, waterfall edge. Matching marble slab backsplash is sure to turn heads
- Fitted with sophisticated plumbing fixtures, including under-mount stainless steel sink and contemporary faucet in matte black
- Superior, soft-close cabinet doors and recessed LED under-cabinet lighting
- Pull-out garbage/recycling drawer and built-in cabinet organizers provide every opportunity to take full advantage of the Kitchen's storage
- In sink garburator for quick and easy food waste disposal
- Fully integrated, select millwork panelled gas appliance package for a sleek, seamless appearance

Bathe in Luxury

- Premium plumbing fixtures outfit each full bathroom with sleek under-mount sinks, daring matte black faucets, comfort height toilets and spa-inspired shower systems
- The Master Ensuite showcases an extravagantly built-up marble vanity countertop over contemporary rich wood millwork with custom, full width, mirrored medicine cabinet
- The Master Ensuite features a lavish freestanding soaker tub purposefully positioned to promote taking in the view while you unwind. Integrated shower bench and private water closet are also included luxuries
- The Powder Room flaunts an on-counter vessel sink, matte black fixtures, sophisticated brass sconces and white quartz countertop
- Marble tile bathroom wet walls and floor provide striking elegance and minimal grout lines
- The secondary bathroom is equipped with a deep alcove tub/shower combo and double sinks, rich wood vanity with contemporary white quartz counter
- In-floor electric heating adds quick comfort to each bathroom



SPECTRE

3 BED+DEN &
2.5 BATH

INDOOR 2200 SF
OUTDOOR 580 SF



In our continuing effort to improve and maintain the high standard of the Fantom Development, the Developer reserves the right to modify or change plans, specifications, features, upgrades, options, promotions and prices without notice. Materials, finishes, features and upgrades are subject to availability and may be substituted at the Developer's sole discretion. All views, dimensions, scales and sizes are based on Architectural measurements. Renderings are an artist's conception and are intended as general reference only. Please refer to the Disclosure Statement for specific offering details. E. & O. E.